

DS

Self Priming Centrifugal Pump

Model T8A3S-B

Size 8" x 8"



VARIOUS PATENTS APPLY



PUMP SPECIFICATIONS

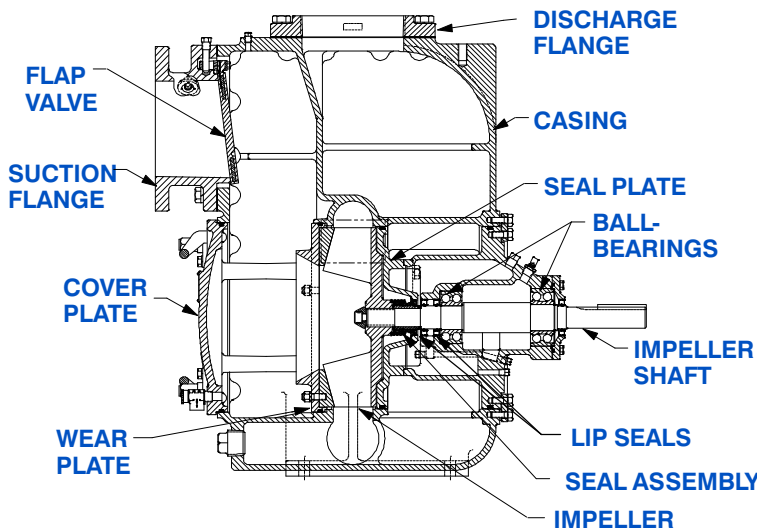
- Size:** 8" (203 mm) ASA Flanged Suction x 8" (203 mm) NPT Female Discharge.
 - Casing:** Gray Iron 30.
Maximum Operating Pressure 83 psi (572 kPa).*
 - Semi-Open Type, Two Vane Impeller:** Ductile Iron 65-45-12.
Handles 3" (76,2 mm) Diameter Spherical Solids.
 - Impeller Shaft:** Alloy Steel 4150.
 - Shaft Sleeve:** Alloy Steel 4130.
 - Replaceable Wear Plate:** Gray Iron 30.
 - Removable Adjustable Cover Plate:** Gray Iron 30; 94 lbs. (43 kg).
 - Flap Valve:** Neoprene w/Nylon and Steel Reinforcing.
 - Seal Plate:** Gray Iron 30.
 - Radial and Thrust Bearings:** Open Double Row Ball.
 - Bearing Housing:** Gray Iron 30.
 - Bearing and Seal Cavity Lubrication:** SAE 30 Non-Detergent Oil.
 - Flanges:** 125# Gray Iron 30.
 - Gaskets:** Buna-N, Compressed Synthetic Fibers, PTFE, Cork and Rubber.
 - O-Rings:** Buna-N.
 - Hardware:** Standard Plated Steel.
 - Brass Pressure Relief Valve.**
 - Bearing and Seal Cavity Oil Level Sight Gauges.**
 - Optional Equipment:** Metal Bellows Seal. Automatic Air Release Valve. High Pump Temperature Shutdown Kit. 120V/240V Casing Heater. Self-Cleaning Wear Plate.
 - Gray Iron 30 Spool Flanges:
8" ASA Discharge (**Specify Model T8A3S-B /F**).
200 mm DIN 2527 (PN 16) Suction and Discharge (**Specify Model T8A3S-B /FM**).
- *Consult Factory for Applications Exceeding Maximum Pressure and/or Temperature Indicated.*



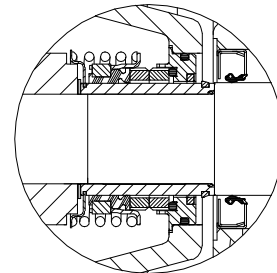
Shown with Optional Discharge Spool Flange (Available in ASA or DIN Standard Sizes).

SEAL SPECIFICATIONS

Cartridge Type, Mechanical, Oil-Lubricated, Double Floating, Self-Aligning. Tungsten Titanium Carbide Rotating and Stationary Faces. Stainless Steel 316 Stationary Seat. Fluorocarbon Elastomers (DuPont Viton® or Equivalent). Stainless Steel 18-8 Cage and Spring. Maximum Temperature of Liquid Pumped, 160°F (71°C).*



SEAL DETAIL



THE GORMAN-RUPP COMPANY • MANSFIELD, OHIO

GORMAN-RUPP OF CANADA LIMITED • ST. THOMAS, ONTARIO, CANADA

www.grpumps.com

Specifications Subject to Change Without Notice

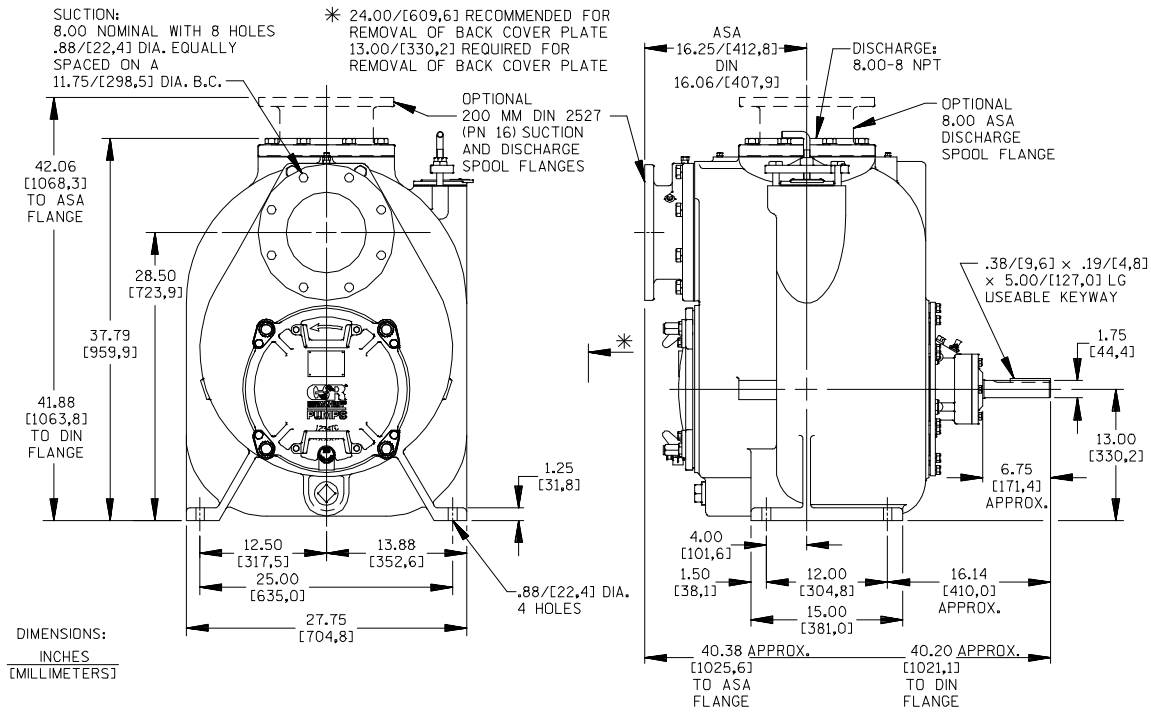
Printed in U.S.A.

Specification Data

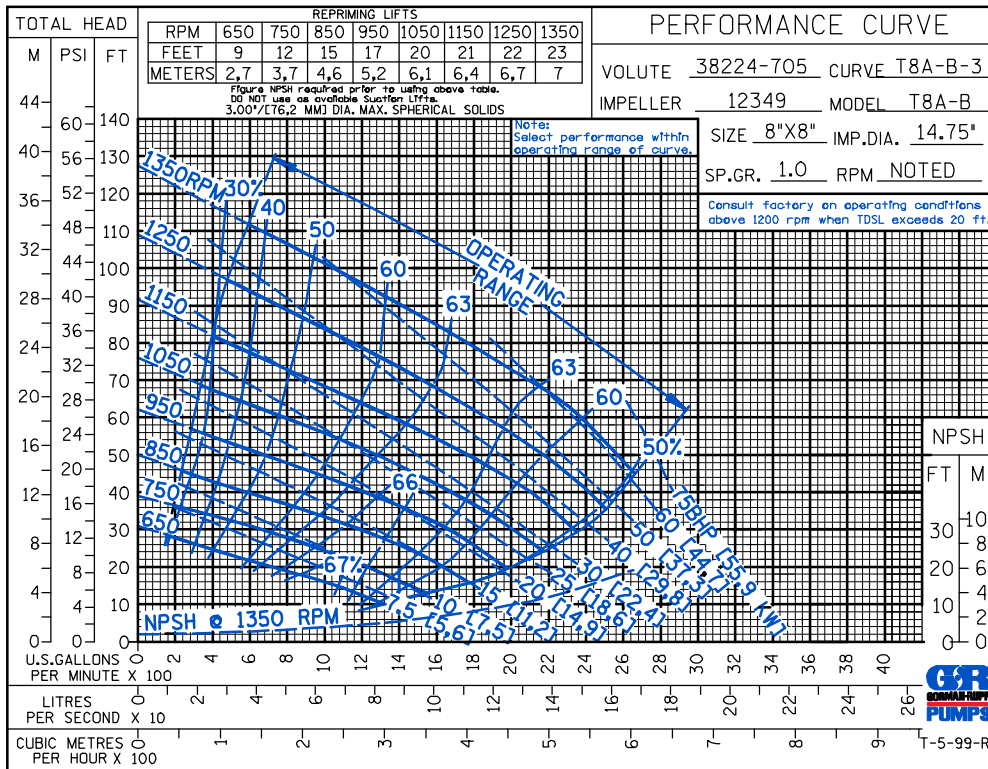
SECTION 55, PAGE 2300

APPROXIMATE DIMENSIONS and WEIGHTS

NET WEIGHT: 1295 LBS. (587 KG.)*
SHIPPING WEIGHT: 1399 LBS. (635 KG.)*
EXPORT CRATE: 47.9 CU. FT. (1,36 CU. M.)
***ADD 35 LBS. (15,9 KG.) W/EACH SPOOL FLANGE**



OPTIONAL ASA OR DIN STANDARD SPOOL FLANGES AVAILABLE



THE GORMAN-RUPP COMPANY • MANSFIELD, OHIO

GORMAN-RUPP OF CANADA LIMITED • ST. THOMAS, ONTARIO, CANADA

Specifications Subject to Change Without Notice

Printed in U.S.A.